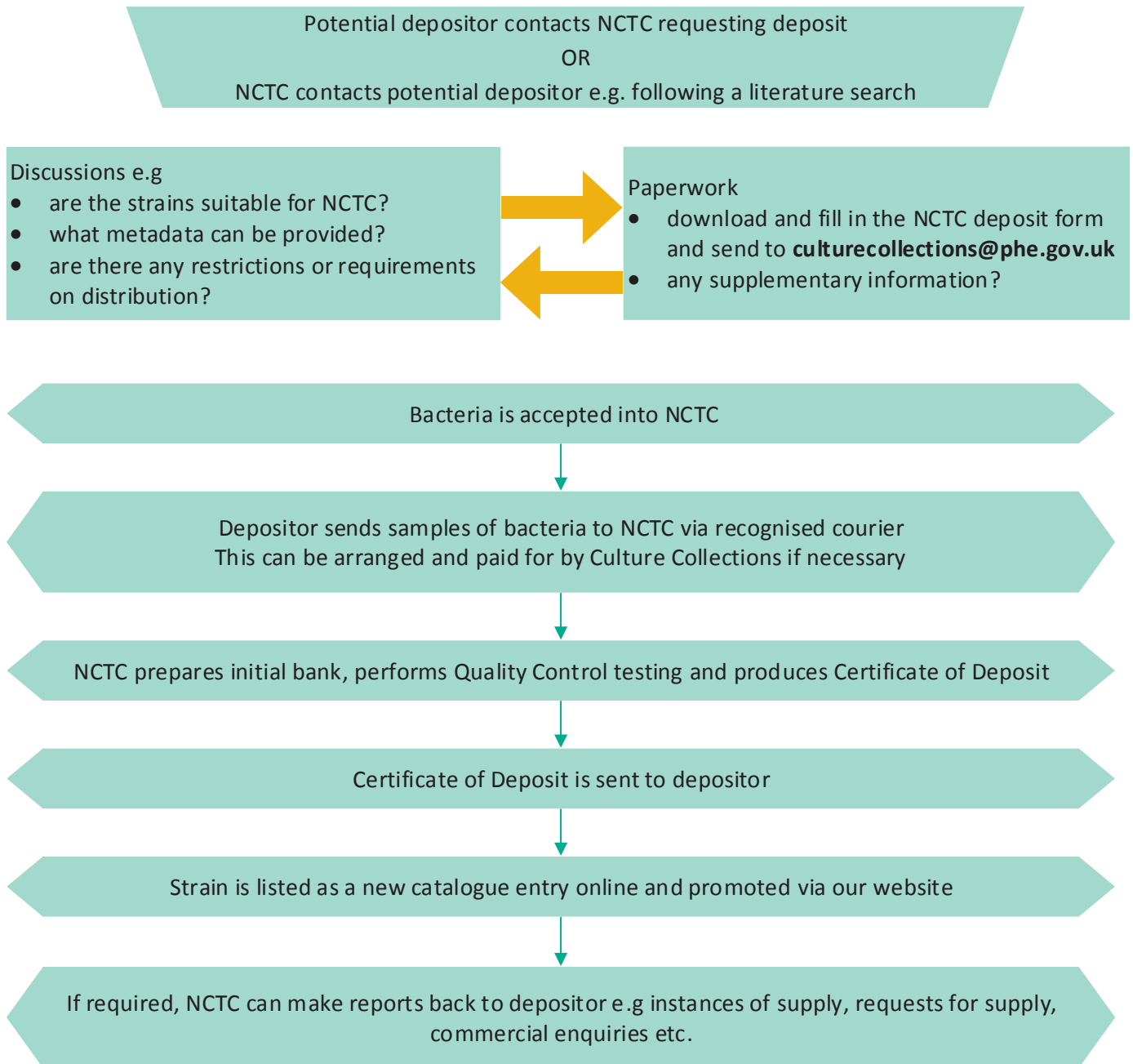


How to deposit

The process for depositing bacterial strains is relatively simple and requires a dialogue between the depositor and NCTC. This is essential to ensure that relevant biosafety and culture information is captured. The system is deliberately flexible in order for NCTC and end users to meet depositor requirements



Deposit forms can be downloaded from our website
www.phe-culturecollections.org.uk/forms
www.phe-culturecollections.org.uk/depositwithus

If you have difficulty obtaining dry ice or shipping infectious material to NCTC, please contact us for assistance.