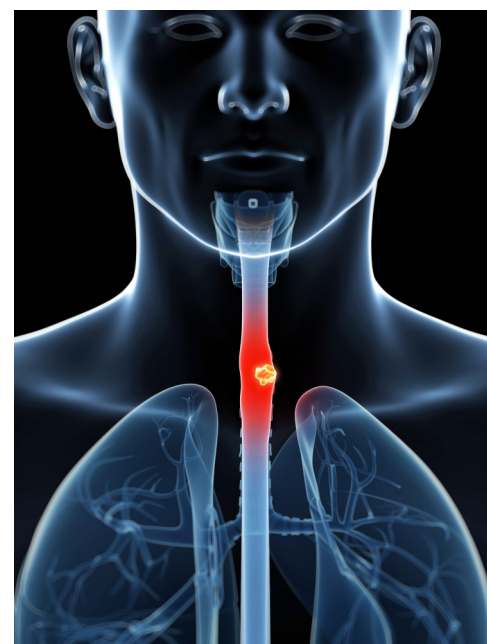


Oesophageal Cell Lines

A series of oesophageal adenocarcinoma (EAC) cell lines are available in the ECACC General Collection catalogue. The majority of these cell lines have been studied by Boonstra *et al.*, 2010, who in a world-wide effort sought to verify the authenticity of all available EAC cell lines by comparing the cell lines to the original primary tumour tissue.

Boonstra *et al.* discovered that cell lines SEG-1, BIC-1, and SK-GT-5 are not EAC cell lines but the following respectively: large cell lung cancer cell line H460, colorectal adenocarcinoma cell line SW620, and gastric fundus carcinoma cell line SK-GT-2. They also confirmed that cell lines FLO-1, KYAE-1, SK-GT-4, OE19, OE33, OACP4C, OACM5.1, ESO26, and ESO51 are derived from human EACs. All nine of these verified EAC cell lines, together with their genotyping information, have been deposited with ECACC.



Reference: Boonstra *et al.*, (2010) Verification and Unmasking of Widely Used Human Esophageal Adenocarcinoma Cell Lines. *J Natl Cancer Inst.* Feb 24;102(4):271-4. [PMCID:PMC2902814](https://pubmed.ncbi.nlm.nih.gov/2902814/)

Catalogue No.	Cell Line Name	Keywords
11012009	ESO26	Adenocarcinoma of the gastroesophageal junction
11012010	ESO51	Distal oesophageal adenocarcinoma
11012001	FLO-1	Distal oesophageal adenocarcinoma
11012002	KYAE-1	Distal oesophageal adenocarcinoma
94072021	KYSE-270	Human oesophageal squamous cell carcinoma
94072011	KYSE-30	Human Asian squamous cell carcinoma
94072023	KYSE-410	Human oesophageal squamous cell carcinoma
94072012	KYSE-70	Human oesophageal squamous cell carcinoma
11012006	OACM5.1 C	Barretts adenocarcinoma, adenocarcinoma of distal oesophagus
96071721	OE19	Human Caucasian oesophageal carcinoma
96062201	OE21	Human Caucasian oesophageal squamous cell carcinoma
96070808	OE33	Human Caucasian oesophageal carcinoma
11012008	SK-GT-2	Adenocarcinoma of the Gastric fundus, poorly-differentiated
11012007	SK-GT-4	Oesophagus adenocarcinoma, well-differentiated
11012005	OACP4 C	Gastric cardia adenocarcinoma

W: www.phe-culturecollections.org.uk/ecacc

E: culturecollections.BusinessE@phe.gov.uk

T: +44 (0)1980 612 947